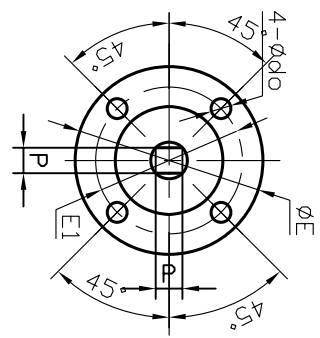


Nominal pressure	PN16	
Test pressure	Strength test	2.4Mpa
pressure	Sealing test	1.76Mpa
Maximum working temperature	-10°C to +90°C	
Suitable Media	W.O.G etc	

- 1.Design and manufacture according to API 609.
- 2.Face to face according to DIN3202 -K1
- 3.Flange drilling according to DIN2501 PN16.
- 4.Top flange drilling according to ISO 5211.
- 5.Pressure test according to API598.



Size	L	DIN2501PN16		H1	H2	H3	øZ
		øD1	n-ød1				
DN40	33	110	4-18	68	139	29	12.6
DN50	43	125	4-18	80	161	29	12.6
DN65	46	145	4-18	89	175	29	12.6
DN80	46	160	8-18	95	181	29	12.6
DN100	52	180	8-18	114	200	29	15.77
DN125	56	210	8-18	127	213	29	18.92
DN150	56	240	8-22	139	226	29	18.92
DN200	60	295	12-22	175	260	35	22.1
DN250	68	355	12-26	203	292	35	28.45
DN300	78	410	12-26	242	337	35	31.6

Size	ISO 5211 Top Flange					
	Flange NO.	øE	øE1	øE2	4-ød10	P*P
DN40	F05	65	50	35.5	4.8	9X9
DN50	F05	65	50	35.5	4.8	9X9
DN65	F05	65	50	35.5	4.8	9X9
DN80	F05	65	50	35.5	4.8	9X9
DN100	F07	90	70	55.5	4-10	11X11
DN125	F07	90	70	55.5	4-10	14X14
DN150	F07	90	70	55.5	4-10	14X14
DN200	F10	125	102	70.5	4-12	17X17
DN250	F10	125	102	70.5	4-12	22X22
DN300	F10	125	102	70.5	4-12	22X22

Item	Part name	material	qty	remark
6	Seat	NBR/ EPDM	1	
5	Disc	SS316	1	
4	Stem	SS410	1	
3	O Ring	NBR/ EPDM	2	
2	Bushing	PTFE	5	
1	Body	Cast iron	1	

DIN	Wang	WEIGHT	MATERIAL
CHK		SCALE	Butterfly Valve
APP		DATE	02/25/2010

Huihua

REV	2010-02	B10W-HJ
-----	---------	---------